

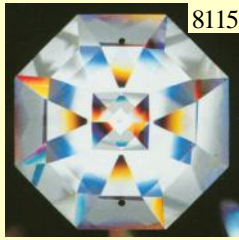
A Famous Maker of Crystal...**SWAROVSKI**[®]

8000 Series Chandelier Prisms

Swarovski Laser Logo on every 8000 series piece



- *Very High Name Recognition
- *Perfect Quality on Virtually Every Piece
- *Some Very Popular Pieces in this Line
- *ICE has **Uber-Competitive Prices**



8115

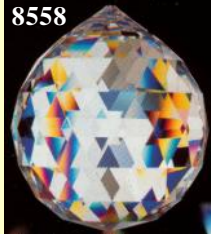
Popular Staple Design
12 colors in 14mm size



8269a

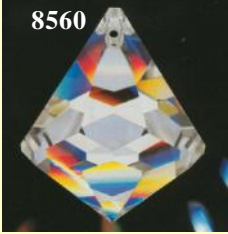


8269



8558

#1 in Swarovski Sales
12 colors !



8560



8601



8611

Top 5 in
Swarovski
Sales



8621



8641



8721



8741



8745

Top 10 sales
for Swarovski



8755

Top 10 sales
for Swarovski



8806



8831

No longer in
production
Limited qty.



8901



8950-0011

#2 in Swarovski Sales



8950-0021



8950-0031

#3 in Swarovski Sales



8950-0041



8950-0051
Top 10 sales
for Swarovski



8950-1011



8950-2011



8950-2021



8950-2031



8950-3011



8950-3021



8950-3031



8950-3051



8950-3061

Pricey, yet
has solid sales



8950-4011



8950-4041



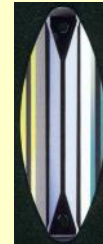
8950-5011



8950-8011



8950-8031



8950-8041



8950-8051



8950-8081



8950-8091

Swarovski 8000 Series Colors

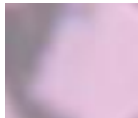
All 11 colors shown plus AB are available in the 8115-14mm, 8558-20mm, 30mm & 40mm
Colors also available in selected styles/sizes. See price list for available colors



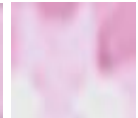
AG (Ant Green)
An "Off" Green in
the Aqua Family



BO (Bordeaux)
A soft red / deep
pink hue



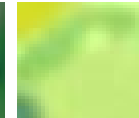
VI (Violet)
A lavender color



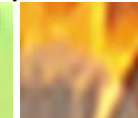
RO (Rose)
A soft / subtle
pink tone



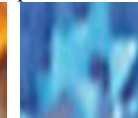
EM (Emerald)
A medium green



LP (Lt. Peridot)
A light green



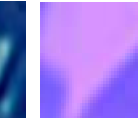
TO (Topaz)
Burnt orange /
amber



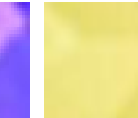
MS (Med Saph)
A medium blue



DS (Dk Saph)
A dark blue ...
Pretty in sunlight



BV (Blue Violet)
Purple with blue
tones added



LT (Lt. Topaz)
Brilliant yellow